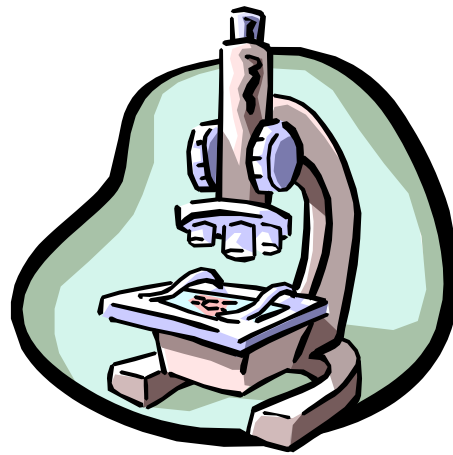


SERVICE GUIDE

Private laboratory of clinical chemical analysis

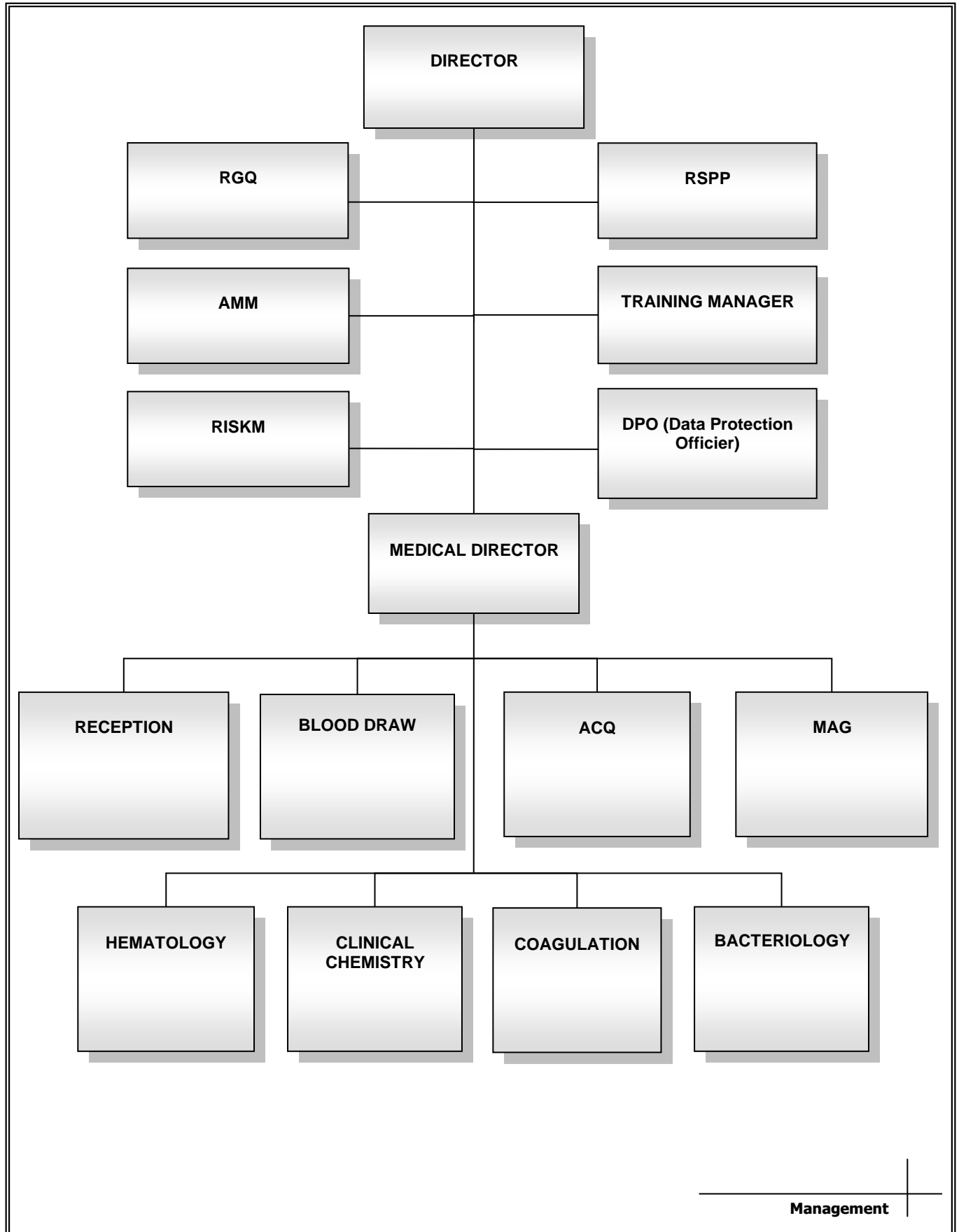
The Service Guide serves as the tool for communication and interaction with its clients (patients, family members, referring physicians...) and represents the specific commitment to increasingly efficient, attentive, and sensitive management towards its guests.



Document revision status		
Rev.	Date	Motivation
00	21.08.08	Document issuance
01	05.05.09	Update for Accreditation
02	01.10.10	Organizational Chart Update
03	23/03/13	Organizational Chart Update
04	22/04/15	Access mode update
05	06/05/16	Paragraph structure update
06	19/07/19	Organizational Chart Update
07	07/03/22	Update to the new authorization manual
08	31/10/23	Exam list update

APPROVAL

ORGANIGRAMMA



1. USER RIGHTS AND RESPONSABILITY

User rights

- The customer has the right to be assisted with care and attention, respecting human dignity.
- The customer has the right to always be identified by their first and last name. They also have the right to be addressed with 'you' (formal).
- The customer has the right to obtain information from the healthcare facility regarding the services provided, access procedures, and related competencies. They also have the right to immediately identify laboratory staff
- The customer has the right to receive information that allows them to give truly informed consent before undergoing examinations
- The customer also has the right to be informed about the possibility of alternative investigations and treatments, even if they can be carried out in other facilities
- The customer has the right to ensure that the results of the conducted tests remain confidential
- The customer has the right to submit complaints that must be considered by the staff

Responsability

- The customer is required to have responsible behavior at all times, respecting and understanding the rights of others, with the willingness to collaborate with medical, nursing, and technical staff
- The user is required to respect the environments, equipment, and furnishings located within the facility.

2. LABORATORY INFORMATION

The Health Management of BIOS laboratory is entrusted to Dr. AGOSTINELLI ARIANNA (biologist - specialist in biochemistry and clinical chemistry).

3. ADMINISTRATIVE SERVICE

The BIOS laboratory is a LIMITED LIABILITY COMPANY. The legal representative is Mrs. ALESSANDRINI FRANCESCA..

Mrs. ALESSANDRINI FRANCESCA is in charge of the administrative department.

4. SERVICE ACCESS PROCEDURES

- Access to the laboratory is allowed for all users; it is located on the ground floor of a building at Via Donizetti, 2 – Castelfidardo (AN).
- Health services are accepted without appointment, except for specific tests (prolactin curve, vaginal swabs, urethral swabs, etc.). In such cases, appointments can also be made by phone at the number 071-7825021.

BUSINESS HOURS

- **MONDAY TO FRIDAY 7:30 AM – 1:00 PM, AFTERNOON 5:00 PM – 7:30 PM**
- **SATURDAY 7.30 AM – 12.30 AM**
- **SUNDAY CLOSED**

5. ACCESS HOURS FOR SAMPLING:

For samplings, the following schedule is observed:

MONDAY TO SATURDAY 7.30 AM – 9.00 AM

Home samplings are performed upon request.

6. TIMELINES AND ACCESS SCHEDULE FOR REPORT RETRIEVAL:

The results of some tests conducted at the laboratory (e.g., complete blood count, PT, HCG, urine test, clinical chemistry tests...) are available on the same day.

Immunometry tests are delivered after 2 days.

Bacteriology tests are delivered after 3-4 days.

The results of tests conducted in-house are delivered after 3-4 days, for specific tests, the times may be longer.

Delivery times are communicated to the user at the time of sampling.

If the results are not ready for the indicated day, the user is notified by phone, indicating the new date.

It is possible to collect the reports by observing the following schedule:

- **FROM MONDAY TO FRIDAY 10:00 AM – 1:00 PM**
5:00 PM – 7:30 PM
- **SATURDAY 10:00 AM – 12.30 PM**

The user is also provided with personal credentials to view the results online and print the report.

The reports are available from the scheduled date for collection with no time constraints.

7. ACCESS TIMES TO HEALTH DOCUMENTATION

ONLINE REPORTS

The reports are available to the customer online for 90 days from the date of the examination due to password expiration. The customer can access their private area on the laboratory's website using their username and password.

Upon password expiration, the customer can request a new one to regain access to the private area.

REPORTS AT THE LABORATORY

At the laboratory headquarters and at the collection centers in Osimo and Ancona, it is possible to request reports/health documentation issued by our facility. The request can be made by the customer who underwent the tests or by an expressly delegated representative.

The Bios facility ensures to provide the documentation immediately upon request.

8. LABORATORY SERVICES

The laboratory performs:

- Hematological and clinical chemistry analyses
- Bacteriological analyses

The laboratory provides the following services:

- Toxicological analyses
- Chemical-physical and bacteriological analyses on water samples
- Bacteriological analyses on food
- Food intolerances testing
- Prenatal safe
- Breath test

To undergo the analyses, it is sufficient to present yourself directly at the counter, equipped with the prescription filled out by the attending physician.

The tests can also be conducted upon verbal request; in this case, the customer is not entitled to benefit from the National Health Service facilities and must bear the full cost of the tests.

Upon request, home sample collections are carried out for a fee.

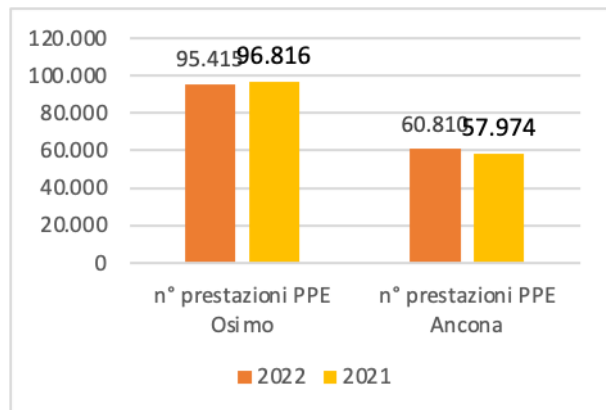
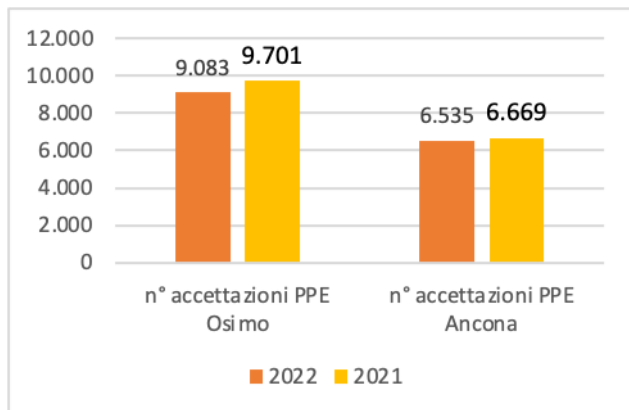
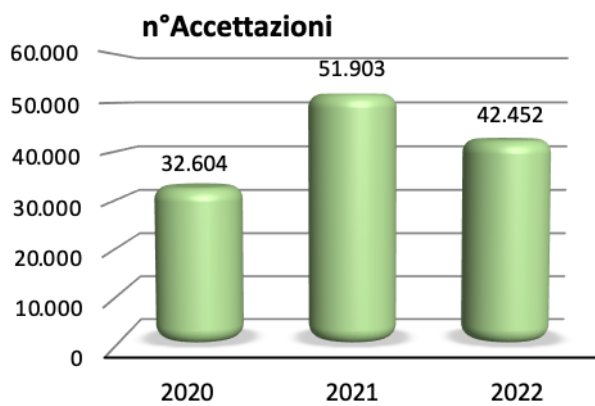
The following tests are conducted by appointment:

- ◆ Vaginal and cervical swabs, prolactin curve, glucose tolerance test, spermograms

The laboratory is able to carry out almost all requested laboratory analyses, and for some low-frequency analyses, it seeks the expertise of external laboratories.

9. VOLUMES OF SERVICES PROVIDED

Graphs showing the trend of the volumes of services provided by the facility are provided:



10. PROCEDURE FOR BOOKING AND CARRYING OUT AMBULATORY SERVICES

10.1. ACCEPTANCE

The doctor's prescription must include the following information:

- Name, surname e address
- Health insurance card number and/or taxpayer identification code of the patient, specifying any exemptions from payment for the service
- Type of the requested service
- Diagnostic question
- Doctor's stamp and signature
- Date

10.2. PRIVACY

At the time of acceptance, the patient is informed about the processing of sensitive data and is invited to sign the consent forms

The administrative staff is available for any information regarding legislative provisions on privacy.

10.3. PAYMENT METHODS FOR SERVICES

Payment for services will occur at the time of acceptance, following the entry of personal information and the upload of the analyses (unless otherwise specified or required). Automatically, for non-exempt cases, the computer system will generate an invoice with the co-payment amount calculated for each prescription, which cannot include more than 8 determinations according to the law.

The rates applied for services within the National Health Service (SSN) are those specified in the Regional Tariff, meaning that exempt patients do not pay, and non-exempt patients are subject to the payment of the co-payment only. For privately performed services, i.e., those whose amount does not exceed the value of the co-payment equal to €36.20, a "Service Fee" of €5.00 is applied for each prescription.

Non-exempt citizens are required to pay for specialist medical assistance according to the current rates, up to the limit set by current regulations.

Payments can be made in cash, by credit card, or with a debit card.

The administrative and service staff is available for any clarification.

10.4. WAITING LISTS

There are no waiting lists: tests are conducted at the time of the request during the collection hours.

Some specific tests (such as vaginal and cervical swabs, etc.) are conducted on predetermined days of the week by appointment. Therefore, for these tests, booking is necessary. The acceptance staff checks the Laboratory's Calendar program and, based on availability, schedules appointments for the earliest suitable date. The Calendar program is available on the PC and can be consulted upon request.

10.5. QUEUE MANAGEMENT

The queues are managed using a numerical reservation system. Upon arrival at the laboratory, the user takes their numbered ticket and waits in the waiting area. The acceptance staff calls users based on the sequential numbering, which can be tracked on the illuminated display, ensuring user privacy.

10.6. NON-CONFORMING SAMPLES

The following samples are not accepted:

- Urine and other biological materials for culture examinations in non-sterile containers;
- Urine and stool samples in quantities less than required for the examination;
- Stool samples collected more than 1 day ago and not stored in the refrigerator;
- Unidentified samples or samples not accompanied by a specific request containing all the necessary information for acceptance;
- Samples packaged in incorrect/non-suitable containers;
- Contamination of the container;
- Unsuitability of containers regarding safety standards
- Coagulated samples;
- Hemolyzed samples (if it is not possible to repeat the collection, hemolysis is reported in the report). In such cases, the staff contacts the client to request either a new sample or a repeat of the collection.

10.7. ORAL TRANSMISSION OF RESULTS

Patients are orally provided with results only for the following analyses:

- PT and INR
- BLOOD GLUCOSE LEVELS
- NUMBER OF RED BLOOD CELLS, WHITE BLOOD CELLS, HEMOGLOBIN, AND PLATELETS
- RAPID TEST RESULTS FOR STREPTOCOCCUS FROM A THROAT SWAB

Results are reported solely and exclusively after identifying, through the available personal data (date of birth and address), the interlocutor as the concerned patient.

The patient is then asked to repeat the values just dictated to ensure accurate understanding.

Any result deemed alarming, once confirmed, is orally reported directly to the patient's attending physician.

In the event of the physician being unavailable and if the situation requires, the patient is directly notified.

10.8. PRESCRIPTIONS

The requisitions related to services provided on a freelance basis are withheld by the facility for the necessary time for exam processing. Once the report is issued, they are made available to the patient for a period of five days. After this term, if the patient does not request their return, they will be destroyed..

11. EXAM PRICES

The prices charged are those established by the current regional tariff attached.

12. PATIENT PREPARATION, SAMPLING PROCEDURES, COLLECTION OF SPECIMENS FOR EXAMINATION, AND PRESCRIPTIONS FOR THE POST-EXAMINATION PERIOD

BLOOD DRAW

The patient undergoing a blood draw must fast for 8-10 hours. Only the consumption of water is allowed.

Venous blood is drawn from the subcutaneous veins in the anterior region of the elbow.

In normal subjects, needles with a diameter of 21G are used; in children or individuals with particularly small veins, butterfly needles with a diameter of 23G are used.

Verify the patient's identity through an open-ended question.

Verify the match between printed labels and requested tests and prepare the necessary materials.

Wear personal protective equipment (PPE).

Apply the tourniquet and identify the vein for puncture through careful inspection and/or palpation using the fingertip.

In case of a difficult vein, massaging the arm from the wrist to the elbow may be done.

Cleanse the chosen area with a cotton ball soaked in disinfectant. Do not palpate the vein again.

Collect the required amount of blood using Vacutainer tubes..

If a syringe is used, draw the correct amount of blood and divide it, taking care to respect the levels indicated on the tube.

The tubes containing anticoagulants should be gently mixed by inversion..

During the blood draw, the client should be in a comfortable position with the back supported and the arm well extended.

If the person is particularly sensitive, it is advisable to place them in a supine position..

After the blood draw, it is recommended for the patient to apply pressure on the draw site for approximately two minutes while keeping the arm extended. The patient is advised to wait briefly in the laboratory area to prevent or manage any potential fainting.

To ensure patient comfort, blood draws are performed in a dedicated room equipped with beds. For privacy, the blood draw room is completely separated from the waiting area.

GLUCOSE/INSULIN TOLERANCE TEST

The patient must fast for 8-10 hours.

The blood draws are performed according to the methods described earlier;

For pregnant patients, blood draws are conducted before glucose administration, at 60 minutes, and at 120 minutes. For others, the instructions outlined in the medical request are followed

Patients are advised not to drink, eat, smoke, and to remain at rest during the examination period

The patient is advised to wait briefly in the laboratory area to prevent or manage any potential fainting.

BREATH TEST

The patient must fast for 8-10 hours.

The patient's breath is collected in the designated vial, and after orally administering the solution specified according to the type of test to be performed, subsequent samples are collected (the time intervals and the number of samples to be collected vary depending on the test).

URINE TEST

For a complete urine test, collect a sample of first-morning urine and deliver it to the laboratory as soon as possible..

The container for use can be obtained free of charge at the laboratory or purchased at a pharmacy.

No prescription for the post-examination period.

SEMEN ANALYSIS

To schedule an appointment with the laboratory.

The container to be used for sample collection must be sterile and can be obtained free of charge at the laboratory or purchased at a pharmacy.

The patient must observe a period of abstinence from sexual intercourse ranging from a minimum of 3 days to a maximum of 7 days and should have discontinued antibiotic therapy for at least 5 days.

Perform a thorough local cleaning, collect the sample directly into the sterile container, taking care not to contaminate it.

If you collect the sample at home, deliver it within 1 hour and transport it at body temperature.

No prescription for the post-examination period.

SPERM CULTURE

The patient must have discontinued antibiotic therapy for at least 5 days..

The container to be used for sample collection must be sterile and can be obtained free of charge at the laboratory or purchased at a pharmacy..

Perform a thorough local cleaning, collect the sample directly into the sterile container, taking care not to contaminate it, and deliver it to the laboratory as soon as possible.

No prescription for the post-examination period.

URINOCOLTURA

The patient must have discontinued antibiotic therapy for at least 5 days.

The container to be used for collecting the urine sample must be sterile and can be obtained free of charge at the laboratory or purchased at a pharmacy.

Proceed as follows::

- Perform a thorough local cleaning;
- Discard the first drops of urin;
- Collect the urine from the first morning void (or at least 3 hours after the last voiding) directly into the container, being careful not to touch the inner walls;
- Close the container and deliver it to the laboratory as soon as possible.

No prescription for the post-examination period.

URINE FOR MICROALBUMINURIA

The patient must collect the first morning urine sample.

No prescription for the post-examination period.

24-HOUR URINE COLLECTION

One should obtain a suitable container, which can be obtained at the laboratory.

To perform the collection:

- Discard the first urine in the morning;
- From this moment onwards, collect all urine produced over the next 24 hours, including the first one in the following morning.

- The container should be stored in a cool place (in the refrigerator) throughout the entire collection period.
- No prescription for the post-examination period..

FECAL EXAMINATION FOR PARASITES

Collect a small amount of stool (about the size of a walnut) and place it in a clean container (containers with a scoop are available).

The sample must not be contaminated with urine.

The container can be obtained free of charge at the laboratory or purchased at a pharmacy.

No prescription for the post-examination period.

FECAL OCCULT BLOOD TEST (FOBT)

Collect a small amount of stool (about the size of a walnut) and place it in a clean container (containers equipped with a scoop are available).

The sample must not be contaminated with urine..

The test is specific for human blood, so no specific diet is required, but it is advisable to avoid the menstrual period.

The container can be obtained free of charge at the laboratory or purchased at a pharmacy.

No prescription for the post-examination period.

FECAL CULTURE

The patient must have discontinued antibiotic therapy for at least 5 days.

Collect a small amount of stool (about the size of a hazelnut) and place it in a clean container (containers equipped with a scoop are available). The sample must not be contaminated with urine and should be delivered to the laboratory as soon as possible. The container can be obtained free of charge at the laboratory or purchased at a pharmacy.

No prescription for the post-examination period.

STOOL TEST FOR THE DETECTION OF ROTAVIRUS, ADENOVIRUS, HELICOBACTER, CAMPYLOBACTER, CALPROTECTIN

Collect a small amount of stool (about the size of a walnut) and place it in the container

The container can be obtained free of charge at the laboratory or purchased at a pharmacy.

No prescription for the post-examination period.

THE THROAT SWAB, EAR SWAB

The patient must have discontinued antibiotic therapy for at least 5 days and be fasting (pharyngeal swab).

No prescription for the post-examination period.

URETHRAL SWAB

To schedule an appointment with the laboratory.

The patient must have discontinued antibiotic therapy for at least 5 days

"It is necessary to avoid urinating for a few hours before the examination. Please report if currently undergoing antibiotic therapy.

No prescription for the post-examination period.

VAGINAL SWAB

To schedule an appointment with the laboratory.

The patient must have discontinued antibiotic therapy for at least 5 days, and on the day before the examination, she should abstain from sexual intercourse and avoid vaginal douching.

No prescription for the post-examination period.

IMMUNOLOGICAL PREGNANCY TEST ON URINE

The test is performed on a urine sample, preferably from the first morning. The method used allows for a reliable diagnosis after 10-12 days from conception.

URINARY VANILLYLMANDELIC ACID/CATECHOLAMINES

The patient must collect urine for 24 hours.

Before starting the collection, pour 10ml of hydrochloric acid into the container.

No prescription for the post-examination period.

ALDOSTERONE/CORTISOL URINARY ANALYSIS

The patient must collect urine for 24 hours.

Before starting the collection, pour 10g of boric acid into the container..

No prescription for the post-examination period.

SCOTCH TEST

Apply transparent tape to the patient's anal sphincter in the morning, before cleaning and defecation, for a few seconds, and then stick it smoothly onto a clean slide

No prescription for the post-examination period.

PAP-TEST

To schedule an appointment with the laboratory.

The sampling should be performed between the eleventh and twenty-first day of the menstrual cycle.

To undergo the sampling, the patient must abstain from sexual intercourse and refrain from vaginal douching in the 24 hours preceding the examination.



No prescription for the post-examination period.



LAB SERVICES

code	Test description	Material	Method-Instrument		Reference ranges	Delivery times
90.01.5	BILE ACIDS	S.	COBAS 6000	Enzymatic colorimetric	1.00-6.00 umol/l	24h
90.43.5	URIC ACID	S.	COBAS 6000	Enzymatic colorimetric	Men 3.5-7.2 mg/dl Women 2.6-6.0 mg/dl	24 h
90.43.5	URIC ACID IN URINE	U.24h	COBAS 6000	Enzymatic colorimetric	250-750 mg/24 ore	24h
90.03.4	VALPROIC ACID	S.	COBAS 6000	Homogeneous immunoenzymatic	50.0-100.0 ug/ml	2 gg.
90.04.5	ALANINE AMINOTRANSFERASE (ALT/GPT)	S.	COBAS 6000	UV-IFCC	Men up to 41 U/L Womed up to 31U/L	24h
90.05.1	ALBUMIN	S.	COBAS 6000	turbidimetry	3.5 – 5.2 g/dl	24h
90.05.5	ALPHA-FETOPROTEIN (AFP)	S.	COBAS 6000	ECLIA	0.0-5.8 ng/ml	2 gg.
91.13.3	ADENOVIRUS	feci	Test on slide		NEGATIVE	24h
90.06.4	ALPHA-AMYLASE	S.	COBAS 6000	direct substrate	28-100 U/l	24 h
90.06.5	PANCREATIC AMYLASE	S.	COBAS 6000	Enzymatic colorimetric	13-53 U/l	24 h
90.52.4	ANA	S.	CHORUS	immunoenzymatic	NEGATIVE	2 gg.
90.85.1	ANTIBIOGRAM	Coltura batterica	VITEK 2 COMPACT	M.I.C.		2gg.
90.51.4	Anti-Gliadin Deamidated A Antibodies	S.	CHORUS	Immunoenzymatic	NEG < 12 AU/ml doubt from 12 to 18 POS > 18 AU/ml	2 gg.
90.51.4	Anti-Gliadin Deamidated A Antibodies	S.	CHORUS	Immunoenzymatic	NEG < 12 AU/ml doubt from 12 to 18 POS > 18 AU/ml	2 gg.
91.18.3	Anti HBsAg	S.	COBAS 6000	ECLIA	NON-REACTIVE	2 gg.
91.17.5	Anti-core Antibodies	S:	COBAS 6000	ECLIA	NON-REACTIVE	2gg.
90.53.5	Anti-TSH Receptor Antibodies	S.	COBAS 6000	ECLIA	< 1.75 IU/L	2 gg.
90.51.4	Anti-TPO Antibodies	S.	COBAS 6000	ECLIA	< 34 IU/ml	2 gg.
90.54.4	Anti-TG Antibodies	S.	COBAS 6000	ECLIA	< 115 IU/ml	2gg.
9047315	Anti-Transglutaminase IgA Antibodies	S:	CHORUS	Immunoenzymatic	NEG < 12 AU/ml Doubt from 12 to 18 POS > 18 AU/ml	2 gg.
9047315	Anti-Transglutaminase IgG Antibodies	S.	CHORUS	Immunoenzymatic	NEG < 12 AU/ml Doubt from 12 to 18 POS > 18 AU/ml	2 gg.
90.57.5	ANTITHROMBIN 3	S.	COBAS 6000	cromogenic	80-120 %	24h
90.09.2	ASPARTATE AMINOTRANSFERASE (AST/GOT)	S.	COBAS 6000	UV-IFCC	Men up to 38 U/L Women up to 32 U/L	24 h
90.44.1	UREA	S.	COBAS 6000	UREA UV	Up to 50 mg/dl	24 h
90.44.1	URINARY UREA (AZOTURIA)	U.24h	COBAS 6000	UREA UV END-POINT	10-30 g/ 24 hours	24 h
90.10.1	BETA 2 MICROGLOBULIN	S.	COBAS 6000	Immunoturbidimetric	Up to 60 years 0,8-2,4 mg/dl Over 60 years up to 3 mg/dl	24 h
90.10.4	TOTAL BILIRUBIN	S.	COBAS 6000	colorimetric	0.2-1.2mg/dl	24 h
90.10.5	DIRECT BILIRUBIN	S.	COBAS 6000	colorimetric	Up to 0.3 mg/dl	24 h
90.55.2	CA 15.3	S.	COBAS 6000	ECLIA	< 25 IU/ml	2 gg.
90.55.1	CA 125	S.	COBAS 6000	ECLIA	< 35 IU/ml	2 gg.
90.55.3	CA 19.9	S.	COBAS 6000	ECLIA	< 39 IU/ml	
90.11.4	CALCIUM	S.	COBAS 6000	colorimetric	5-20 years 9.2-11.0 mg/dl 21-50 years 8.8-10.2 mg/dl <50 years 8.4-9.7 mg/dl	24 h
90.11.4	CALCIUM IN URINE	U 24h	COBAS 6000	colorimetric	From 100 to 300 mg/24h	24 h
90.90.2	CHLAMYDIA TESTING	T.C./T.U.	Test on slide	immunological	NEGATIVE	24 h
9021301	FECAL CALPROTECTIN	F	Test on slide	Immunochromatographic	< 50 ug/g	24 h

code	Test description	Material	Method-Instrument		Reference ranges	Delivery times
90.88.5	CAMPYLOBACTER	F.	Test on slide	Immunocromatografic	NEGATIVE	24h
90.56.3	CEA	S.	COBAS 6000	ECLIA	Age 20-40 non-smoker <3.8ng/ml smoker <5,5 ng/ml Age 40-69 non-smoker <5.2 ng/ml smoker <6.5ng/ml	2 gg.
9004102	CITRULLINE	S.	CHORUS	Immunoenzymatic	NEG < 12 AU/ml Doubt from 12 to 18 POS > 18 AU/ml	2 gg.
90.16.4	CREATININE CLEARANCE	S.U.24h	COBAS 6000	Modified Jaffe	Men:70-135ml/min Women: 70-120 ml/min	24 h
90.44.1	UREA CLEARANCE	S.U.24h	COBAS 6000	UREA UV END-POINT	V/m<2 ml:41-76 ml V/m>2 ml:60-90 ml	24 h
90.15.3	CORTISOL	S.	COBAS 6000	ECLIA	Morning 6.02-18.4 yg/dl Afternoon 2.68-10.5 ug/dl	2 gg.
91.14.1	CMV IgG	S.	COBAS 6000	ECLIA	Non-reactive< 0,5 U/ml Doubt between0,5 and 1 U/ml Positive > 1 U/ml	2 gg
91.14.3	CMV IgM	S.	COBAS 6000	ECLIA	Non-reactive	2 gg
90.14.1	HDL COLOESTEROL	S.	COBAS 6000	Direct enzymatic	Up to 35mg/dl high risk >60mg/dl low risk	24h
90.14.2	LDL CHOLESTEROL	S.	COBAS 6000	enzymatic spectrophotometric	See tab n.5	24 h
90.14.3	TOTAL CHOLESTEROL	S.	COBAS 6000	enzymatic spectrophotometric	Up to 200 mg/dl	24 h
90.13.3	CHLORIDE	S.	COBAS 6000	Selective ions	95-110 mEQ/l	24 h
90.14.4	CHOLINESTERASE	S.	COBAS 6000	enzymatic	Men 5100-11700 U/l Women 4000-12600 U/l	24 h
90.15.1	KETONE BODIES	U.M.	YH 1800		Absent	24 h
	COVID IgG+IgM	S.	COBAS 6000	ECLIA	Up to 0.89	2 gg.
	COVID IgG + IgM	S.	TEST ON SLIDE	Immunochromatografic	negative	24 h
	COVID SPIKE PROTEIN	S.	COBAS 6000	ECLIA	Up to 0.79	24 h
90.16.3	CREATININE	S.	COBAS 6000	Modified Jaffe	Men:0.6-1.4 mg/dl Women:0.5-1.2mg/dl	24 h
90.16.3	CREATININE IN URINE	U.24h	COBAS 6000	Modified Jaffe	Men:1-2 g/24 h Women:0.8-1.8g/24h	24 h
90.15.4	CREATININE KINASE (CK OR CPK)	S.	COBAS 6000	IFCC	Men: <190 U/l Women: <167 U/l	24 h
90.39.4	Cu	S.	COBAS 6000	Enzymatic colorimetric	70-140 ug/dl	24 h
90.60.2	C3	S.	COBAS 6000	immunoturbidimetrico	90-180mg/dl	24 h
90.60.2	C4	S.	COBAS 6000	immunoturbidimetrico	10-40 mg/dl	24 h
90.61.4	D- DIMER	P.C.	COBAS 6000	immunoturbidimetrico	Up to 0.50 ugFEU/ml	24 h
90.21.1	DIGOXIN	S.	COBAS 6000	ECLIA	0.6 – 1.2 ng/ml	2 gg.
90.18.3	DRUGS OF ABUSE	U.	Test on slide	Immunochromatografic	NEGATIVE	24 h
90.62.2	COMPLETE BLOOD COUNT (CBC)	S.I. EDTA	MINDRAY BC-6800		See tab n°1	24 h
90.28.1	GLYCATED HEMOGLOBIN	S.I. EDTA	GH 900	HPLC	20-46 mmol/mol 4.0 6.4 %	24 h
90.47.3	ENA- 6 SCREEN	S.	CHORUS	Immunoenzymatic	NEGATIVE	2 gg.
90.38.4	SERUM PROTEIN ELECTROPHORESIS	S.	NAZAR	Agarose gel electrophoresis	See tab n°2	24 h
91.21.1	EPSTEIN BARR VIRUS IgG	S.	COBAS 6000	ECLIA	Non-reactive	2 gg.
91.21.1	EPSTEIN BARR VIRUS IgM	S.	COBAS 6000	ECLIA	Non-reactive	2 gg.

code	Test description	Material	Method-Instrument		Reference ranges	Delivery times
90.93.4	CULTURE: GENITOURINARY APPARATUS	T.C./T.V./ T.U./	See manual procedures	cultured	absence of pathogenic germs	3/4 gg.
90.31.4	SEMINAL LIQUID CULTURE	L.S.	See manual procedures	cultured	Negative culture test	3/4gg.
90.93.5	CULTURE: NASOPHARYNGEAL OR PHARYNGEAL SWAB SAMPLES.	T.F./T.N.	See manual procedures	cultured	Development of saprophytic bacterial flora	3/4gg
90.93.3	CULTURE: VARIOUS BIOLOGICAL SAMPLES		See manual procedures	cultured	Negative culture test	3/4gg
90.94.2	URINE CULTURE	U.M.	See manual procedures	cultured	Negative culture test	2/3gg
90.31.4	SEMEN ANALYSIS with culture	L.S.			See tab n.15	¾ gg.
90.19.2	ESTRADIOL (E2)	S.	COBAS 6000	ECLIA	See tab n°6	2 gg.
90.64.2	RHEUMATOID FACTOR	S.	COBAS 6000	Latex turbidimetry	Up to 50 IU/ml	24 h
90.21.04	FECAL OCCULT BLOOD	F.	TEST ON SLIDE	immunological	Negative	24 h
90.22.3	FERRITIN	S.	COBAS 6000	ECLIA	Men 30-400 ug/l Women 13-150ug/l	24 h
90.65.1	FIBRINOGEN	P.C.	SYSMEX-CA 600	Clauss clotting	200-400 mg/dl	24 h
90.22.5	IRON (SERUM IRON LEVEL)	S.	COBAS 6000	Iron gen.2	Men 59-158 ul/dl Women:37-145 ul/dl	24 h
90.23.2	FOLATES	S.	COBAS 6000	ECLIA	4.6-18.7 ng/ml	2 gg.
90.23.5	ALP (ALKALINE PHOSPHATASE)	S.	COBAS 6000	DGKC	Men: 100-270 U/L Women: 100-240U/L	24 h
90.24.3	PHOSPHORUS	S.	COBAS 6000	phosphomolybdate	Adults 2,5-4,5 mg/dl Child: 4.0-7.0mg/dl	24 h
90.24.3	PHOSPHATURIA	U.24/h	COBAS 6000	spectrophotometric	0,4-1,3 g/24h	24 h
90.23.3	FSH	S.	COBAS 6000	ECLIA	See tab n°7	2 gg.
90.43.3	FT3	S.	COBAS 6000	ECLIA	2.0-4.4 pg/ml	24 h
90.42.3	FT4	S.	COBAS 6000	ECLIA	0.93-1.7 ng/dl	24 h
	GARDNERELLA	T.V.	COLTURALE		NEGATIVE	2 gg.
90.25.5	GAMMA-GLUTAMYL TRANSFERASE (GGT)	S.	COBAS 6000	SZASZ	Men: 11-49 U/l Women: 7-32 U/l	24 h
91.05.4	GIARDIA	F.	TEST ON SLIDE	immunological	Negative	24h
90.27.1	BLOOD GLUCOSE	S.	COBAS 6000	enzymatic spectrophotometric	70-110 mg/dl	24 h
90.27.1	GLYCOSURIA	U.M./ 24 h	COBAS 6000	enzymatic spectrophotometric	absent	24 h
90.27.4	CHORIONIC GONADOTROPIN (Pregnancy Test)	U.M.	TEST ON SLIDE	immunological	Negative	24 h
90.27.5	CHORIONIC GONADOTROPIN (HCG)	S.	COBAS 6000	ECLIA	See tab n.3	24 h
90.65.3	BLOOD GROUP (ABO and Rh)	S.I. EDTA	AGGLUTINATION			24 h
90.85.3	HELICOBACTER PILORI	F.	TEST ON SLIDE	immunological	assente	24 h
91.18.5	HBsAg	S.	COBAS 6000	ECLIA	Non-reactive < 0,9 COI Doubt between 0,9 and 1 COI Reactive > 1 COI	2 gg
91.19.5	HCV	S.	COBAS 6000	ECLIA	NON-REACTIVE	2 gg
91.22.4	HIV	S.	COBAS 6000	ECLIA	Non-reactive < 0,9 COI Doubt between 0,9 and 1 COI Reactive > 1 COI	2 gg
90.86.1	Bacteria identification	Coltura batterica	Vitek 2 Compact	Biochemical tests		2 gg
90.69.4	IgG	S.	COBAS 6000	turbidimetry	See tab n.10	24 h
90.69.4	IgA	S.	COBAS 6000	turbidimetry	See tab n.11	24 h

code	Test description	Material	Method-Instrument		Reference ranges	Delivery times
90.69.4	IgM	S.	COBAS 6000	turbidimetry	See tab n.12	24 h
90.68.3	IgE	S.	COBAS 6000	turbidimetry	See tab n.13	2 gg
90.29.1	INSULIN	S.	COBAS 6000	ECLIA	2.6-24.9 uU/ml	2 gg
90.29.2	LDH (Lactate dehydrogenase)	S.	COBAS 6000	UV	Up to 12 years. W <580 U/l M <764 U/l Up to 65 years 240-480 U/l >65 years 265-530 U/l	24 h
90.32.3	LH	S.	COBAS 6000	ECLIA	See tab n°8	2 gg
90.30.2	LIPASE	S.	COBAS 6000	colorimetric	Up to 60 U/L	2 gg
90.32.5	MAGNESIUM	S.	COBAS 6000	colorimetric	1,7-2,55 mg/dl	2 gg
90.98.4	YEASTS IN BIOLOGICAL SAMPLES		See manual procedures	coltured	NEGATIVE	2 gg
908332	MYCOPLASMAS Search from cervical and urethral swabs	TC/TU	See manual procedures	coltured	ABSENT	2 gg
90.33.4	MICROALBUMINURIA	S.	COBAS 6000	turbidimetry	Up to 30mg/gr creat.	24 h
9004116	HOMOCYSTEINE	S.	COBAS 6000	turbidimetry	Adults up to 15 umol/l Eldery up to 20 umol/l	24 h
90.93.2	PARASITES	F.		microscopic	absent	24h
90.35.5	PTH	S.	COBAS 6000	ECLIA	1.6 – 6.9 pmol/l	2 gg
90.37.4	POTASSIUM	S.	COBAS 6000	Selective ions	3.6-5.4 mEq/L	24 h
90.37.4	URINARY POTASSIUM	U 24h.	COBAS 6000	Selective ions	30-90 mEq/24h	24 h
90.72.3	PCR	S.	COBAS 6000	immunoturbidimetric	Up to 1 mg/l	24 h
90.72.3	PCR HS	S.	COBAS 6000	iimmunoturbidimetric	Up to 0,5 mmg/dl	24 h
9021201	proBNP	S.	COBAS 6000	ECLIA	Up to 50 yrs 450 pg/ml Up to 75 yrs 900pg/ml > 75 yrs up to 1800pg/ml	24 h
90.38.1	PROGESTERONE	S.	COBAS 6000	ECLIA	Vedi tabella n 9	2 gg
90.38.5	TOTAL PROTEINS	S:	COBAS 6000	colorimetric	6.4 – 8.3 g/dl	24 h
90.38.5	URINARY PROTEINS	U 24h	COBAS 6000	turbidimetry	< 0,14 gr./24h	24 h
90.56.5	PSA	S.	COBAS 6000	ECLIA	<4,00 ng/ml	24 h
9004106	PSA free	S.	COBAS 6000	ECLIA	<10 % alto rischio 11-25 % medio rischio >25% basso rischio	24 h
9056501	PSA reflex	S.	COBAS 6000	ECLIA	See psa, psa fre	24 h
91.13.3	ROTAVIRUS	FECI	Test on slide	immunological	NEGATIVE	24 h
91.26.4	RUBELLA IgG	S.	COBAS 6000	ECLIA	Non-reactive	2 gg.
91.26.4	RUBELLA IgM	S.	COBAS 6000	ECLIA	Non-reactive	2 gg.
90.93.2	PARASITIES	FECI		microscopic	NEGATIVE	1 g.
91.49.3	BACTERIOLOGICAL SAMPLING					
91.48.4	CYTOLOGICAL SAMPLING					
	HOME SAMPLING					
91.49.3	MICROBIOLOGICAL SAMPLING					
91.49.2	VENOUS BLOOD SAMPLING					
90.86.1	SALMONELLA FROM CULTURE BIOCHEMICAL IDENTIFICATION		See manual procedures	coltured	absent	3/4gg
90.21.4	OCCULT BLOOD	F.		immunological	NEGATIVE	24 h
90.93.2	SCOTCH TEST	F.		Selective ions	negative	24 h
90.40.4	SODIUM	S.	COBAS 6000	Selective ions	135-148 Meq/L	24 h
90.40.4	URINARY SODIUM	U 24h	COBAS 6000	Selective ions	50-200 Meq/24h	24 h

code	Test description	Material	Method-Instrument		Reference ranges	Delivery times
	RAPID ANTIGEN COVID TEST	T. rinofar.	TEST ON SLIDE	Immunochromatographic	NEGATIVE	24 h
90.93.5	Rapid streptococcal test	T.F.	Test on slide	Immunochromatographic	negative	24h
91.08.5	TAS	S:	COBAS 6000	Latex turbidimetry	Up to 200 IU/ml	24 h
90.75.4	PROTHROMBIN TIME (PT)	P.C.	SYSMEX-CA 600	coagulative	70-120%	24 h
90.76.1	PARTIAL THROMBOPLASTIN TIME (PTT)	P.C.	SYSMEX CA 600	coagulative	22-35 sec.	24 h
90.41.3	TESTOSTERONE	S.	COBAS 6000	ECLIA	See tab n 14	2 gg
9087406	TETANUS IgG	S.	CHORUS	immunoenzymatic	Inf. to 100 mIU/ml vaccination is recommended Between 100 and 1000 mIU/ml Check every 1-2 yrs. Greater than 1000 mIU/ml Check every 2-4 yrs.	2 gg.
90.41.5	THYROGLOBULIN	S.	COBAS 6000	ECLIA	3.5-77.0 ng/ml	2 gg.
91.09.4	TOXO IgG	S.	COBAS 6000	ECLIA	Non-reactive <1.0 IU/ml Grey zone 1<x<3 Reactive >3	2 gg
91.09.4	TOXO IgM	S.	COBAS 6000	ECLIA	Non-reactive	2 gg
91.10.5	TPHA	S.		hemagglutination	NEGATIVE	24 h
90.42.5	TRANSFERRIN	S.	COBAS 6000	Turbidimetry	170-340 mg/dl	24 h
90.43.2	TRIGLYCERIDES	S.	COBAS INTEGRA	GOP/ peroxidase	Up to 200 mg/dl	24 h
90.86.4	TRICHOMONAS VAGINALIS	T.V.		immunometrico	Absent	24 h
90.42.1	TSH	S.	COBAS 6000	ECLIA	0.270-4.200 microIU/ml	24 h
9042101	TSH reflex	S.	COBAS 6000	ECLIA	See TSH,FT3,FT4	24 H
90.44.3	URINE (chemical-physical and microscopic)	U.M.	BW 901/3000	Chemical-physical + sediment	See tab 4	24 h
90.82.5	ERYTHROCYTE SEDIMENTATION RATE (VES)	S.I.	CUBE 30 TOUCH	sediment	Men: up to 15 mm/h Women: up to 20 mm/h	24 h
90.13.5	VITAMIN B12	S.	COBAS 6000	ECLIA	191-663 pg/ml	2 gg
9004130	VITAMIN D	S.	COBAS 6000	ECLIA	Up to 30 ng/ml	24 h
90.45.4	ZINC	S.	COBAS 6000	colorimetric	70-120 ug/dl	24h

LEGENDA

<p>S. = SERUM S.I. EDTA= WHOLE BLOOD WITH EDTA S.I.C.= WHOLE BLOOD WITH CITRATE P.C. = CITRATED PLASMA S.E.= WHOLE BLOOD HEPARINIZED U.M.= MORNING URINE U. 24 h = 24 HOURS URINE F. = STOOL</p>	<p>L.S. = SEMINAL FLUID S.V. = VAGINAL DISCHARGE T.V. = VAGINAL SWAB T.U.= URETHRAL SWAB T.C.= CERVICAL SWAB T.F.= PHARYNGEAL SWAB T.N.= NASAL SWAB UFT= LATE SHIFT URINE</p>
--	---

Exams performed in other institutions

NATIONAL CODE	TEST	SAMPLE
90.05.2	ALDOLASE	S.
90.05.4	ALPHA-1 ANTITRYPSIN	S.
90.06.1	ALPHA-1-ACID GLYCOPROTEIN	S.
90.06.5	SALIVARY AMYLASE	S.
90.48.3	ANTI-NATIVE DNA ANTIBODIES	S.
90.39.1	BENCE JONES PROTEIN	U.24h
9021201	BNP - BRAIN NATRIURETIC PEPTIDE	P EDTA
90.12.3	CARBAMAZEPINE	S.
90.58.4	CARBOXYHEMOGLOBIN	S.EDTA
O9001157	CDT - CARBOHYDRATE-DEFICIENT TRANSFERRIN	S.
90.12.1	FECAL CHYMOTRYPSIN	F.
90.15.5	CREATINE KINASE MB (CK-MB)	S.
90.58.2	DIRECT COOMBS TEST	S.EDTA
90.49.3	INDIRECT COOMBS TEST	S.
90.15.3	URINARY CORTISOL	U.24h
90.11.1	C-PEPTIDE	S
91.21.1	EPSTEIN-BARR VIRUS IGG EBNA	S.
90.38.4	URINARY PROTEIN ELECTROPHORESIS	U..24h.
91.17.1	HEPATITIS A IGG (HAV IGG)	S.
91.18.2	HEPATITIS B ANTIBODIES IGG ANTI-E (HBE-IGG)	S.
91.18.4	HEPATITIS B ANTIGEN E (HBE-AG)	S.
90.19.4	FREE ESTRIOL (E3-FREE)	S.
90.91.4	STOOL FOR ENTEROPATHOGENIC ESCHERICHIA COLI	F.
90.21.3	STOOL FOR CHEMICAL AND MICROSCOPIC EXAMINATION	F.
90.21.3	STOOL FOR DIGESTION	F.
91.27.5	STOOL FOR YERSINIA	F.
90.12.3	PHENOBARBITAL	S.
90.24.2	PROSTATIC ACID PHOSPHATASE (PAP)	S.
90.23.4	TOTAL ACID PHOSPHATASE	S.
90.19.4	FREE ESTRIOL (E3)	S.
90.25.1	FRUCTOSAMINE	S.
90.56.2	MCA - MATERNAL SERUM ALPHA-FETOPROTEIN	S.
90.33.5	MYOGLOBIN	S.
90.72.2	PROTEIN C	P.C.
9001150	PROTEIN S	P.C.
90.74.5	RETICULOCYTES	S.EDTA
90.74.2	WAALER ROSE TEST	S.
91.08.1	WIDAL WRIGHT TEST	S.
90.02.5	LACTIC ACID	S.EDTA
90.03.5	VANILLYLMANDELIC ACID (VMA)	U. 24 h
90.15.2	ACTH - ADRENOCORTICOTROPIC HORMONE	S.EDTA
90.05.3	ALDOSTERONE	S./U.
90.40.2	RENIN	P EDTA
90.05.4	ALPHA-1 ANTITRYPSIN	S.
90.17.3	ANDROSTENEDIONE	S.
90.47.5	ANTI-CARDIOLIPIN ANTIBODIES	S.
9047303	ANTI-ENDOMYSIAL ANTIBODIES	S.
90.87.05	ANTI-BORRELIA ANTIBODIES	S.
90.89.2	ANTI-CHLAMYDIA ANTIBODIES	S.
90.48.3	ANTI-NATIVE DNA ANTIBODIES	S.
91.03.1	ANTI-MYCOPLASMA ANTIBODIES	S.
90.52.1	ANTI-MITOCHONDRIAL ANTIBODIES (AMA)	S.

NATIONAL CODE	TEST	SAMPLE
91.24.5	MEASLES ANTIBODIES	S.
9052.2	ANTI-SMOOTH MUSCLE ANTIBODIES (ASMA)	S.
91.25.1	MUMPS ANTIBODIES	S.
90.87.4	PERTUSSIS ANTIBODIES (BORDETELLA)	S.
90.53.2	PLATELET ANTIBODIES	S.EDTA
90.11.5	CALCITONIN	S.
90.12.4	URINARY CATECHOLAMINES	U/24
90.13.2	CYCLOSPORINE	S.EDTA
90.61.3	CYFRA (TUMOR MARKER)	S.
90.16.5	URINARY CHROMIUM	U.
90.17.2	DEHYDROEPIANDROSTERONE SULFATE (DHEA-S)	S.
90.17.5	DIHYDROTESTOSTERONE (DHT)	S..
90.28.2	URINARY HYDROXYPROLINE	U.
90.69.2	IMMUNOFIXATION	S.
90.24.1	BONE ALKALINE PHOSPHATASE ISOENZYME	S.
91.38.5	PAP SMEAR	Pcit.cervice
90.36.3	LEAD	S.EDTA
90.36.4	PYRUVATE KINASE	S.EDTA
90.41.5	FREE TESTOSTERONE	S.
90.03.5	VANILLYLMANDELIC ACID (VMA)	U/24h
90.02.4	URINARY HIPPURIC ACID	UFT
90.02.3	URINARY ORTHO-METHYL HIPPURIC ACID	UFT
9002402	MANDELIC ACID	UFT
9002401	PHENYLGLYOXYLIC ACID	UFT
	TRANS-3-METHYL-2-HEXENOIC ACID (TRANS-MUCONIC ACID)	UFT
9002428	2,5-HEXANEDIONE	UFT
	ORTHO-CRESOL	UFT
	MEK - METHYL ETHYL KETONE	UFT
90222	PHENOLS	UFT
90165	CHROMIUM	UFT
90342	NICKEL	UFT
9002406	TRICHLOROACETIC ACID	UFT
	TRICHLOROETHYLENE	UFT

3.4. LIST OF EXTERNAL LABORATORIES

Laboratory AB in Ancona - service contract signed on 01/02/2015

Fioroni Laboratory in San Benedetto del Tronto, contract signed on 31/10/2011